

Collection NEPALESE RUG



Pour les amoureux d'excellence...

Collection Noué main au Népal (60 ou 80 Nœuds).

Laine Tibétaine et/ou Soie Naturelle, et/ou Soie Végétale (viscose).

Délai de fabrication : 12 à 14 semaines.

Dim standard cm : 200x300 - 300x400.

Dimensions/Formes spéciales : sur demande.

Garantie sans travail des enfants.

Pas de changement de couleurs possible.

For lovers of excellence..

Hand knotted in Nepal

(60 or 80 Knots).

Tibetan Wool and/or

Natural Silk and/or Vegetal Silk

(viscose)

Standard size 200x300 - 300x400.

Customize Size/Shape upon request.

Manufacturing time: 12 - 14 weeks.

Guaranteed no child labour.

No Color Change.

Para los amantes de excelencia...

Anudado a mano en Nepal

(60 o 80 Anudos).

Lana Tibetana e/o Seda Natural e/o

Seda Vegetal (Viscosa).

Medidas estándar : 200x300 - 300x400.

Medidas/Formas especiales por

encargo.

Plazo de Fabricación: 12 - 14 semanas.

Garantizamos sin obra infantil.

Imposibilidad de cambiar colores.



BILBOQUET (Marron)

Noué main au NEPAL - HandKnotted in NEPAL - Anudado a mano en NEPAL
100% Laine Tibétaine
100% Tibetan Wool
100% Lana Tibetana



Collection NEPALESE RUGS & Design Diacasan Edition.

*Dim. Standard – Medidas Estandard (cm):
200x300 - 300x400.*

*Fabrication spéciale - Customization - Personalization :
Dimensions/Formes sur demande.
Size/Shape upon request.
Medidas/Formas por encargo.*



BILBOQUET (Garance)

Noué main au NEPAL - HandKnotted in NEPAL - Anudado a mano en NEPAL
100% Laine Tibétaine
100% Tibetan Wool
100% Lana Tibetana



Collection NEPALESE RUGS & Design Diacasan Edition.

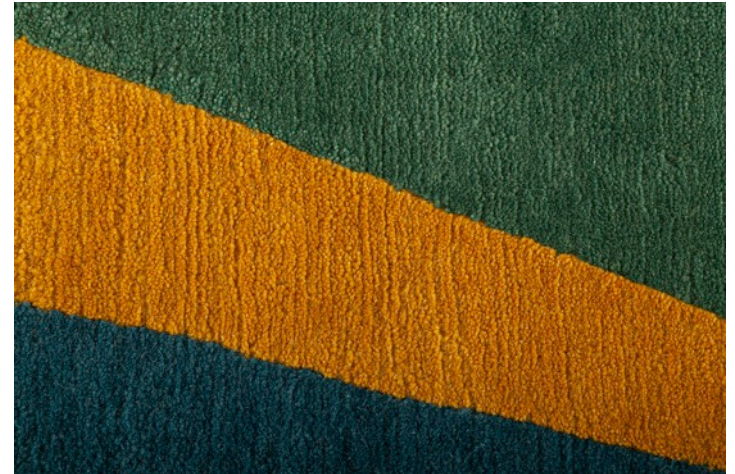
*Dim. Standard – Medidas Estandard (cm):
200x300 - 300x400.*

*Fabrication spéciale - Customization - Personalization :
Dimensions/Formes sur demande.
Size/Shape upon request.
Medidas/Formas por encargo.*



FERIA

Noué main au NEPAL - HandKnotted in NEPAL - Anudado a mano en NEPAL
100% Laine Tibétaine
100% Tibetan Wool
100% Lana Tibetana



Collection NEPALESE RUGS & Design Diacasan Edition.

*Dim. Standard – Medidas Estandar (cm):
200x300 - 300x400.*

*Fabrication spéciale - Customization - Personalization :
Dimensions/Formes sur demande.
Size/Shape upon request.
Medidas/Formas por encargo.*



KILTY

Noué main au NEPAL - HandKnotted in NEPAL - Anudado a mano en NEPAL
100% Laine Tibétaine
100% Tibetan Wool
100% Lana Tibetana



Collection NEPALESE RUGS & Design Diacasan Edition.

*Dim. Standard – Medidas Estandard (cm):
200x300 - 300x400.*

*Fabrication spéciale - Customization - Personalization :
Dimensions/Formes sur demande.
Size/Shape upon request.
Medidas/Formas por encargo.*



LAKE PLACID

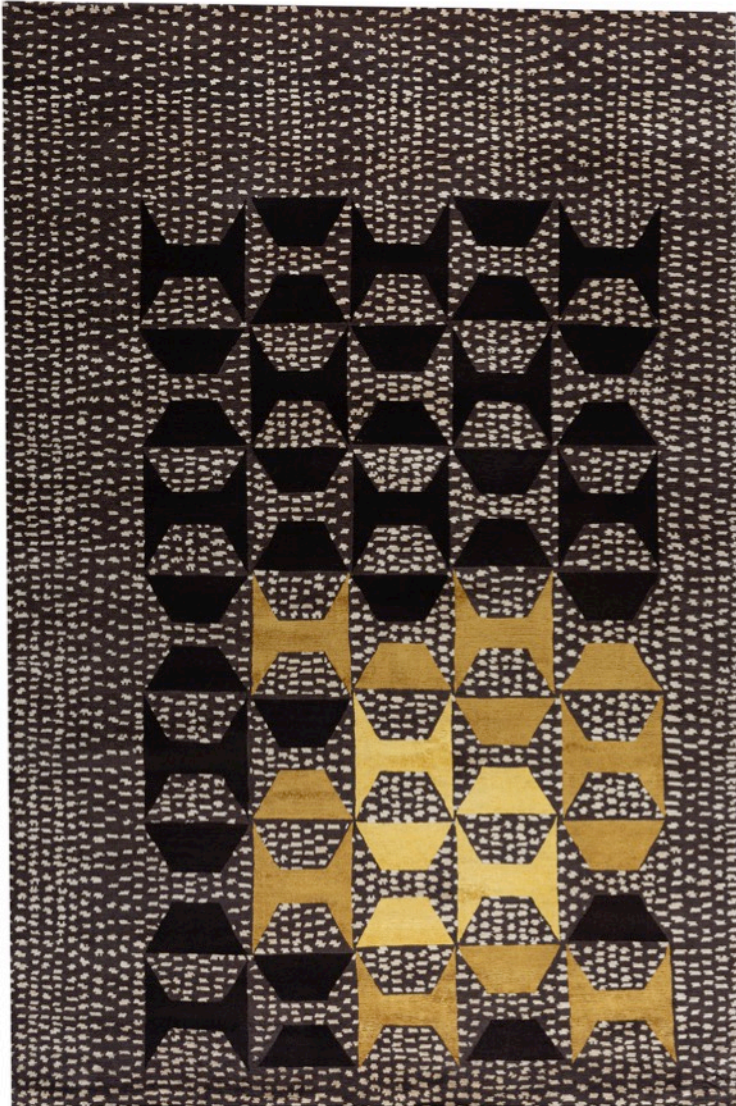
Noué main au NEPAL - HandKnotted in NEPAL - Anudado a mano en NEPAL
100% Laine Tibétaine
100% Tibetan Wool
100% Lana Tibetana



Collection NEPALESE RUGS & Design Diacasan Edition.

*Dim. Standard – Medidas Estandard (cm):
200x300 - 300x400.*

*Fabrication spéciale - Customization - Personalization :
Dimensions/Formes sur demande.
Size/Shape upon request.
Medidas/Formas por encargo.*



MACASSAR

Noué main au NEPAL - HandKnotted in NEPAL - Anudado a mano en NEPAL

80% Laine Tibétaine 20% Soie Naturelle

80% Tibetan Wool 20% Vegetal Silk

80% Lana Tibetana 20% Vegetal Silk



Collection NEPALESE RUGS & Design Diacasan Edition.

Dim. Standard – Medidas Estandard (cm):

200x300 - 300x400.

Fabrication spéciale - Customization - Personalization :

Dimensions/Formes sur demande.

Size/Shape upon request.

Medidas/Formas por encargo.



MIKADO (Sepia)

Noué main au NEPAL - HandKnotted in NEPAL - Anudado a mano en NEPAL
100% Laine Tibétaine
100% Tibetan Wool
100% Lana Tibetana



Collection NEPALESE RUGS & Design Diacasan Edition.

*Dim. Standard – Medidas Estandard (cm):
200x300 - 300x400.*

*Fabrication spéciale - Customization - Personalization :
Dimensions/Formes sur demande.
Size/Shape upon request.
Medidas/Formas por encargo.*



MIKADO (Tuile)

Noué main au NEPAL - HandKnotted in NEPAL - Anudado a mano en NEPAL
100% Laine Tibétaine
100% Tibetan Wool
100% Lana Tibetana



Collection NEPALESE RUGS & Design Diacasan Edition.

*Dim. Standard – Medidas Estandard (cm):
200x300 - 300x400.*

*Fabrication spéciale - Customization - Personalization :
Dimensions/Formes sur demande.*

*Size/Shape upon request.
Medidas/Formas por encargo.*



SANTA FE

Noué main au NEPAL - HandKnotted in NEPAL - Anudado a mano en NEPAL
100% Laine Tibétaine
100% Tibetan Wool
100% Lana Tibetana



Collection NEPALESE RUGS & Design Diacasan Edition.

*Dim. Standard – Medidas Estandard (cm):
200x300 - 300x400.*

*Fabrication spéciale - Customization - Personalization :
Dimensions/Formes sur demande.
Size/Shape upon request.
Medidas/Formas por encargo.*



WOODSTOCK

Noué main au NEPAL - HandKnotted in NEPAL - Anudado a mano en NEPAL
100% Laine Tibétaine
100% Tibetan Wool
100% Lana Tibetana



Collection NEPALESE RUGS & Design Diacasan Edition.

*Dim. Standard – Medidas Estandar (cm):
200x300 - 300x400.*

*Fabrication spéciale - Customization - Personalization :
Dimensions/Formes sur demande.
Size/Shape upon request.
Medidas/Formas por encargo.*



DIACASAN EDITION

TAPIS CONTEMPORAINS – CONTEMPORARY RUGS – ALFOMBRAS CONTEMPORANEAS

Bureau & Showroom - Office & Showroom - Oficina & Tienda

16, rue Cardinet – 75017 Paris

info@diacasan.com - +33 1 55 65 00 45

Agence Commerciale – Business Agency – Agencia Comercial

BDA-PARIS - Benoit Le Gouas

benoit@bda-paris.com

+33 6 81 72 27 14